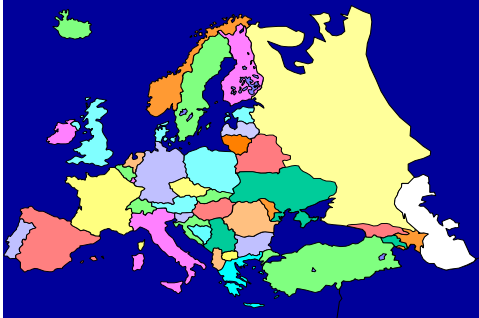


European Academy of Paediatrics Research in Ambulatory Settings Network



**European Academy of Paediatrics
Research in Ambulatory Settings Network
EAPRASnet TASK FORCE**

Stefano del Torso, Italy (CESPER)

Zachi Grossman, Israel, (IPROS)

Javer Diez Dominguez, Spain (VIVA)

Andreas Gerber, Germany (Pediatrician,
Professor in Health Economics, UniKöln)

Alf Nicholson, Ireland

With the collaboration of

Richard C. Wasserman, USA (PROS Director, AAP)

Anna Drabik, Statistician IGKE, Köln, Germany .

EAPRASnet



- December 2008 PSWG, EC meeting
- January 2009 Survey Preparation and Test Mailing List, Web Page
- January Recruitment by Coordinators
- January Survey Mailed, Reminders 3
- February Replies check (> 300 mails)
- March Reminders Dead Line
- April Analysis, Draft

ZG, AG, AD, SdT + National Coordinators

EAPRASnet



www.eapaediatrics.eu/eapras

The screenshot shows the homepage of the EAPRASnet website. At the top left is the EAP logo. The main header features a banner with a group of children and the text 'EAPRASnet'. To the right of the banner are links for 'MEMBERS' and 'LOG IN', and a call to action: 'Become a member. Apply online.' Below the banner is a navigation menu with the following items: 'About EAP', 'Documentation Centre', 'Upcoming Meetings', 'New', 'Links', 'FAQ', 'EAPRASnet', 'EAP membership', and 'PREP Subscription'. The main content area has a heading 'What is the EAPRASnet?' with a right-pointing arrow icon. Below this heading is a paragraph: 'In this pages, you can learn what is the EAPRASnet, our objectives and our rules.' There are two sub-sections: 'ABOUT EAPRASnet' and 'WHAT IS THE MISSION OF EAPRASnet?'. The 'ABOUT EAPRASnet' section contains the text: 'EAPRASnet (European Academy of Paediatrics Research in Ambulatory Settings network) is a practice-based research network that is going to be established in 2009. It will consist of paediatric practitioners from practices in European and Mediterranean countries and research consultants from around Europe in collaboration with the EAP and AAP PROS.' The 'WHAT IS THE MISSION OF EAPRASnet?' section contains the text: 'The mission of EAPRASnet is to improve the health of children and enhance quality of primary care practice by conducting international collaborative practice-based research.' On the right side of the page, there is a 'QUICK ACCESS' sidebar with three links: 'Mission and Objectives', 'Why join EAPRASnet?', and 'How to join?'.

 **EAP**

Become a member.
Apply online.

MEMBERS LOG IN

EAPRASnet

About EAP Documentation Centre Upcoming Meetings New Links FAQ EAPRASnet EAP membership PREP Subscription

 What is the EAPRASnet ?

In this pages, you can learn what is the EAPRASnet, our objectives and our rules.

ABOUT EAPRASnet

EAPRASnet (European Academy of Paediatrics Research in Ambulatory Settings network) is a practice-based research network that is going to be established in 2009. It will consist of paediatric practitioners from practices in European and Mediterranean countries and research consultants from around Europe in collaboration with the EAP and AAP PROS.

WHAT IS THE MISSION OF EAPRASnet?

The mission of EAPRASnet is to improve the health of children and enhance quality of primary care practice by conducting international collaborative practice-based research.

QUICK ACCESS

- Mission and Objectives
- Why join EAPRASnet?
- How to join?

EAPRASnet



Recruitment survey

Country / Pediatric Care System

Austria	M	Israel	P
Belgium	M	Italy	M
Bulgaria	FD	Lithuania	M
Cyprus	P	Luxembourg	M
Czech Republic	P	Netherland	FD
France	M	Slovakia	P
Germany	M	Slovenia	P
Greece	P	Spain	P
Hungary	M	Switzerland	M
Ireland	FD	Sweden	FD



EAPRASnet

Recruitment survey

- PSWG 20 coordinators agreed
- Survey 19 Countries participated
- Recruitment 150 pediatricians
- Participants 139 (**93 %**)
- 1 to 14 pediatricians/country (PILOT)
- 11 countries had 100% replies (> 1 p)



EAPRASnet

Recruitment survey

	PCP	Quest.		PCP	Quest
Austria	525	1	Israel	800	13
Belgium	800	3	Italy	7500	14
Bulgaria	1500	1	Lithuania	464	1
Cyprus	190	7	Luxemb.	28	6
Czech Rep	2293	5	Slovakia	1020	7
France	2614	7	Slovenia	230	10
Germany	6431	9	Spain	5000	9
Greece	1300	5	Switzer.	775	14
Hungary	1590	12	Sweden	200	4
Ireland	0/110	11	Total	32796	139



EAPRASnet

Recruitment survey

- **Designed by EAPRASnet Task Force**
- **Prepared by IGKE, UNIKOLN**
- **Sent through the EAPRAS mailing list**
- **Filled surveys sent back as a file , by mail as an attachment , by fax or by ordinary mail to IGKE**
- **Data Analysis by IGKE (AD and AG)**
- **Presentation by SdT and ZG.**

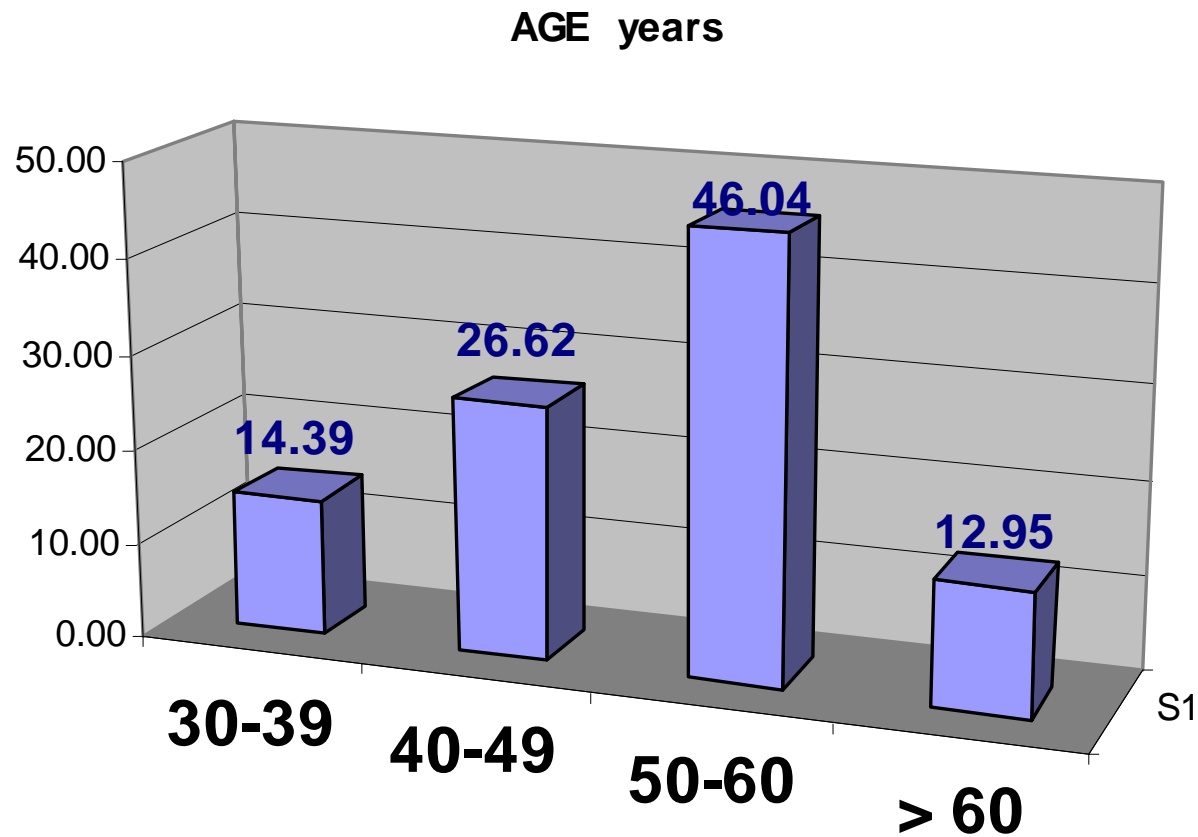


EAPRASnet

Recruitment survey

- To characterize general pediatricians and practice demographics like the age, gender, and time spent in patient care and practice arrangement.
- To provide information on number of patients and age distribution of patients.
- To learn what unsolved issues in pediatric primary care need to be studied, according to the practicing pediatricians' point of view.
- To elucidate the main incentives for engagement in research activity.

Question 1: What is your age (in years)?

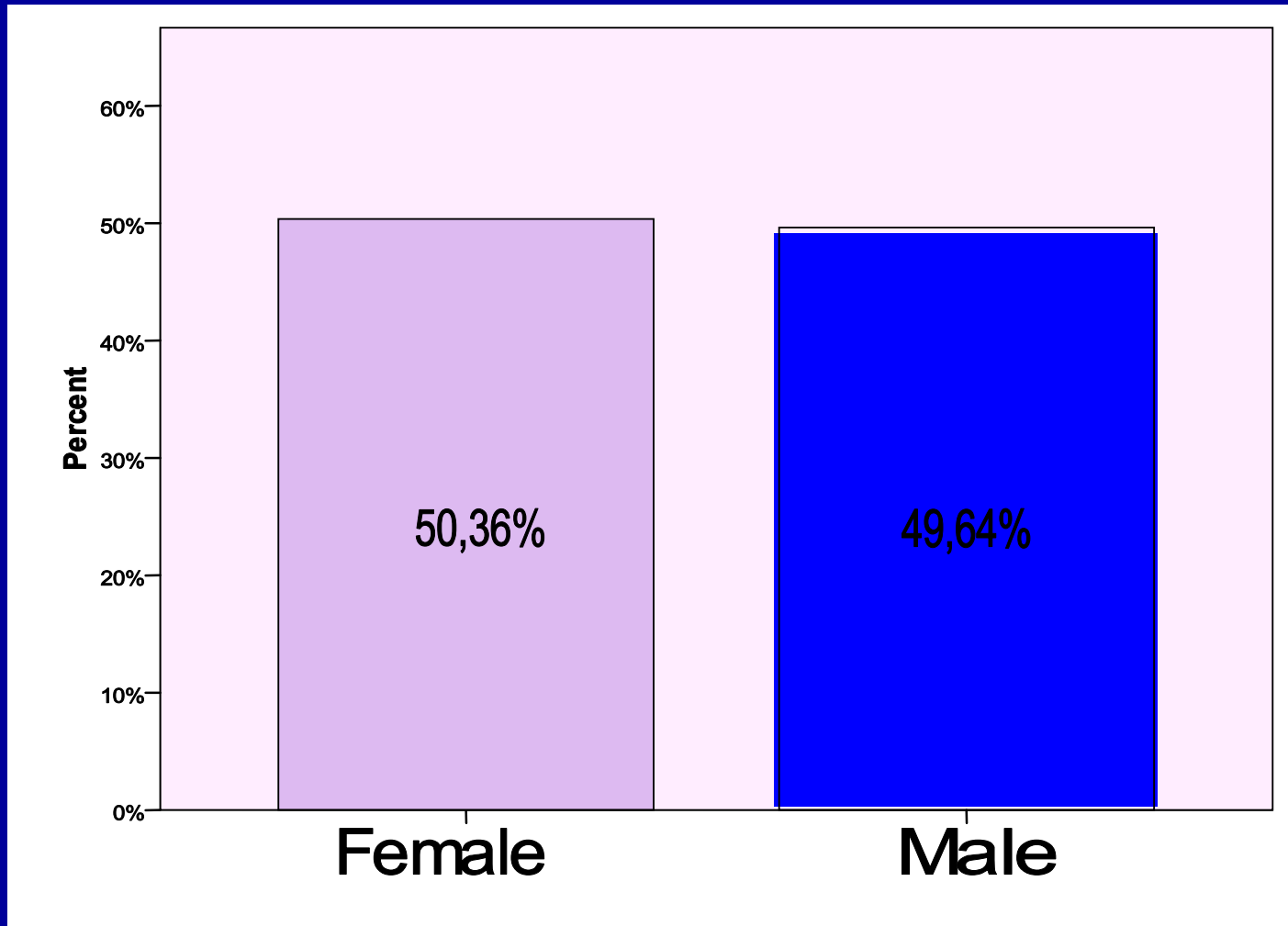


Question 2: In which country do you practice?

Austria	1	0.72%
Belgium	3	2.16%
Bulgaria	1	0.72%
Cyprus	7	5.04%
Czech R	5	3.60%
France	7	5.04%
Germany	9	6.47%
Greece	5	3.60%
Hungary	12	8.63%
Ireland	11	7.91%

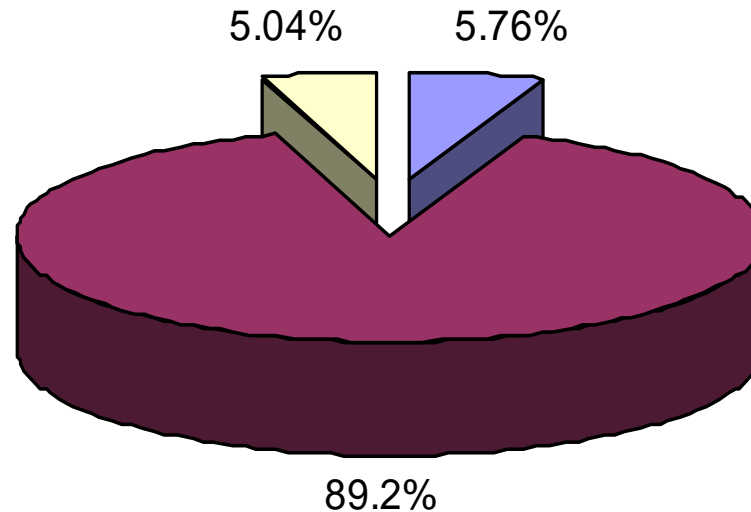
Israel	13	9.35%
Italy	14	10.07%
Lithuania	1	0.72%
Luxemb.	6	4.32%
Slovakia	7	5.04%
Slovenia	10	7.19%
Spain	9	6.47%
Switzerland	14	10.07%
Sweden	4	2.88%
Total	139	100.00

Question 3: What is your gender?



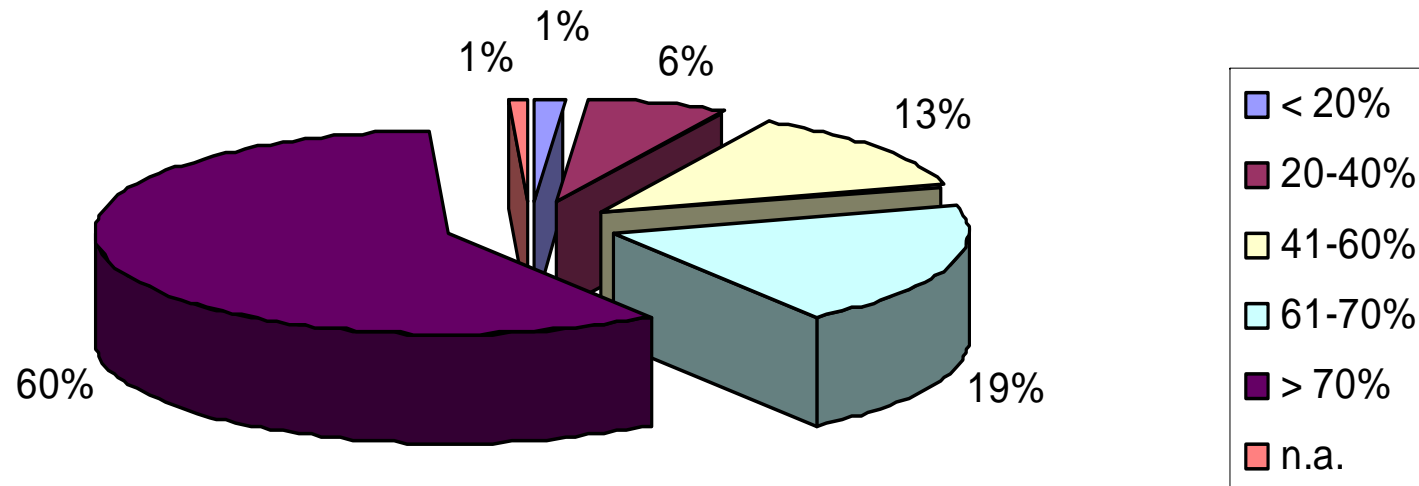
Question 4: What percentage of your time is spent in the following areas?

General Pediatrics > 50% time

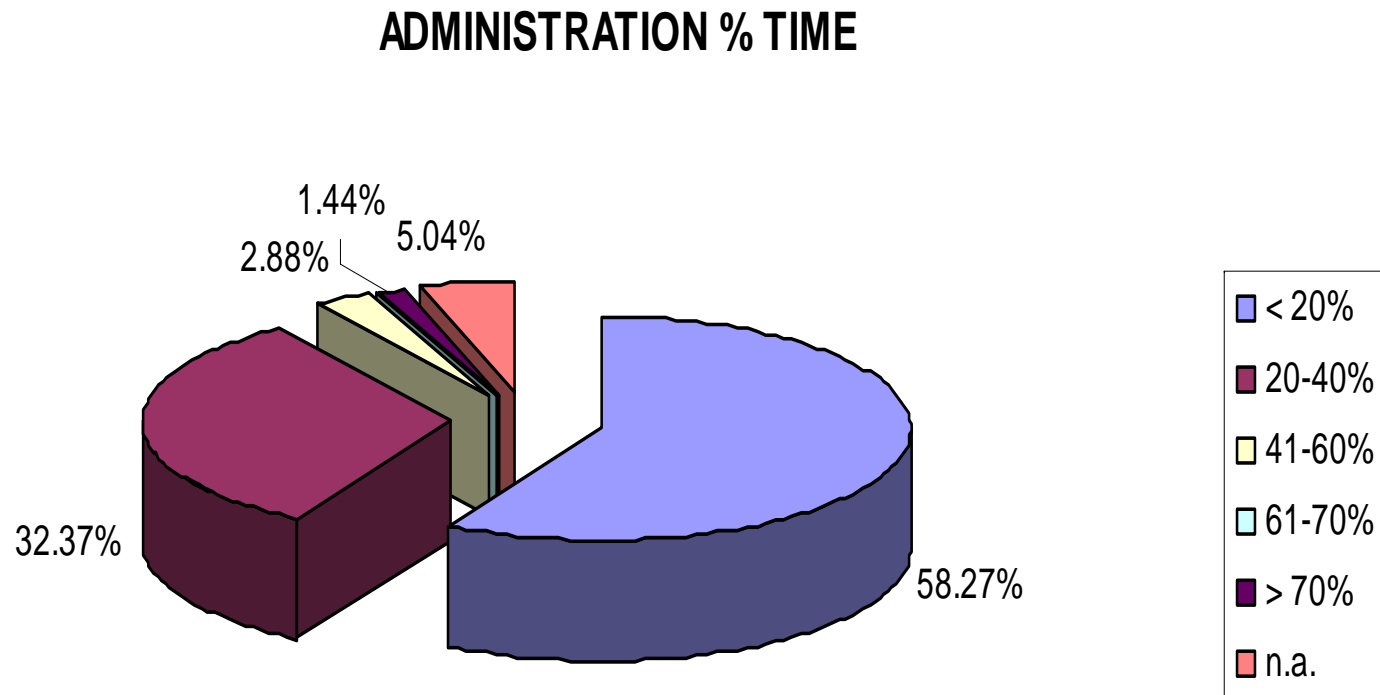


Question 6: During a typical workweek, how many hours do you spend in direct patient care, administration, teaching, research :

Direct Patient Care % time



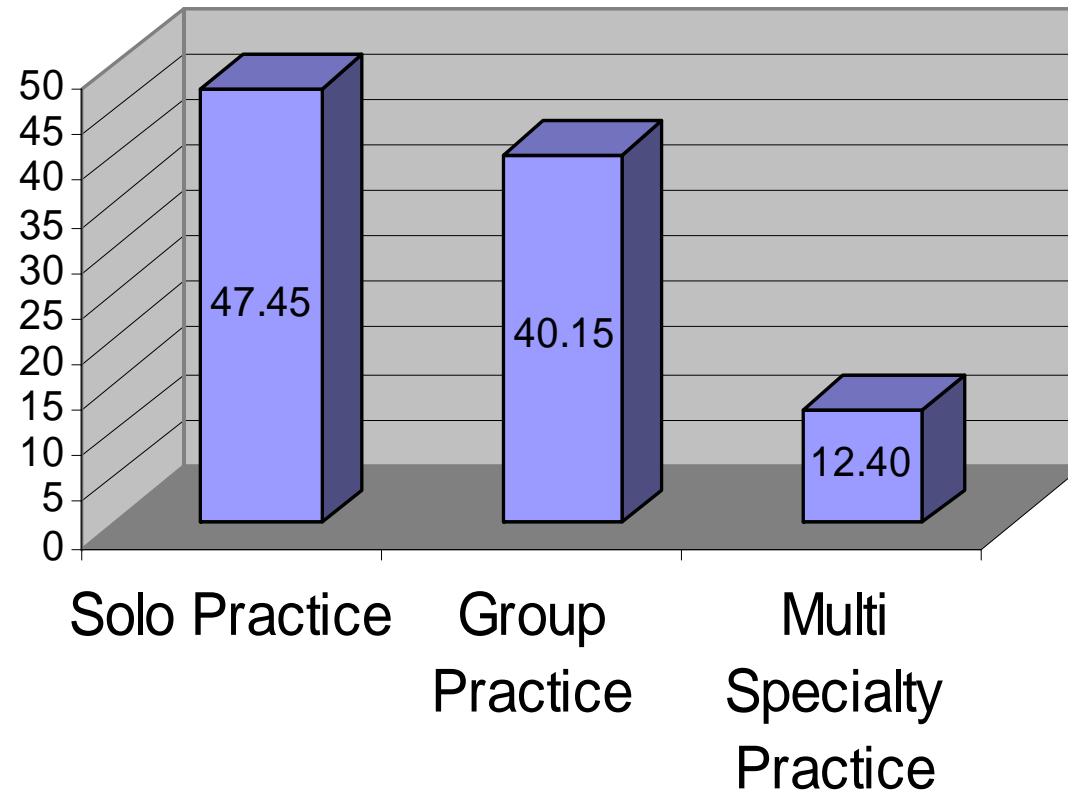
Question 6: During a typical workweek, how many hours do you spend in direct patient care, administration, teaching, research :



Question 7: How many practitioners (including yourself) are associated with this practice?

Nurses		
0	64	46.04%
1	33	23.74%
2	6	4.32%
3	7	5.04%
4	7	5.04%
5	3	2.16%
6	2	1.44%
8	2	1.44%
10	2	1.44%

Question 8: Please indicate your practice arrangement. (137/139)

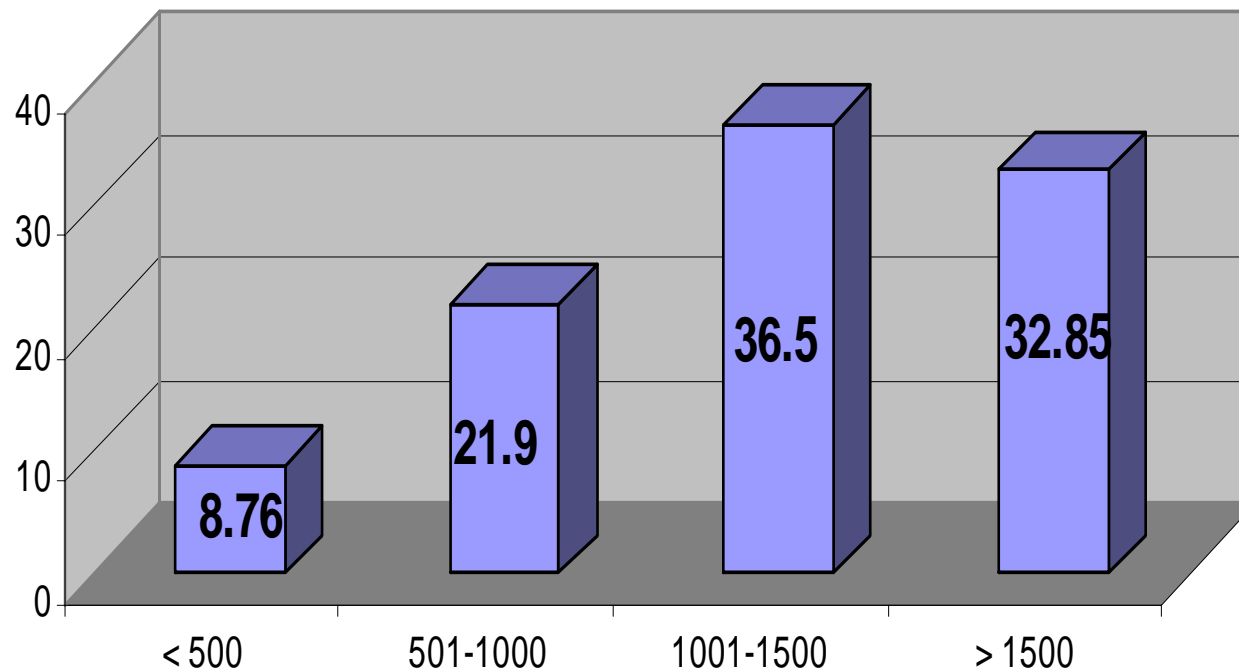


Solo Practice : Others

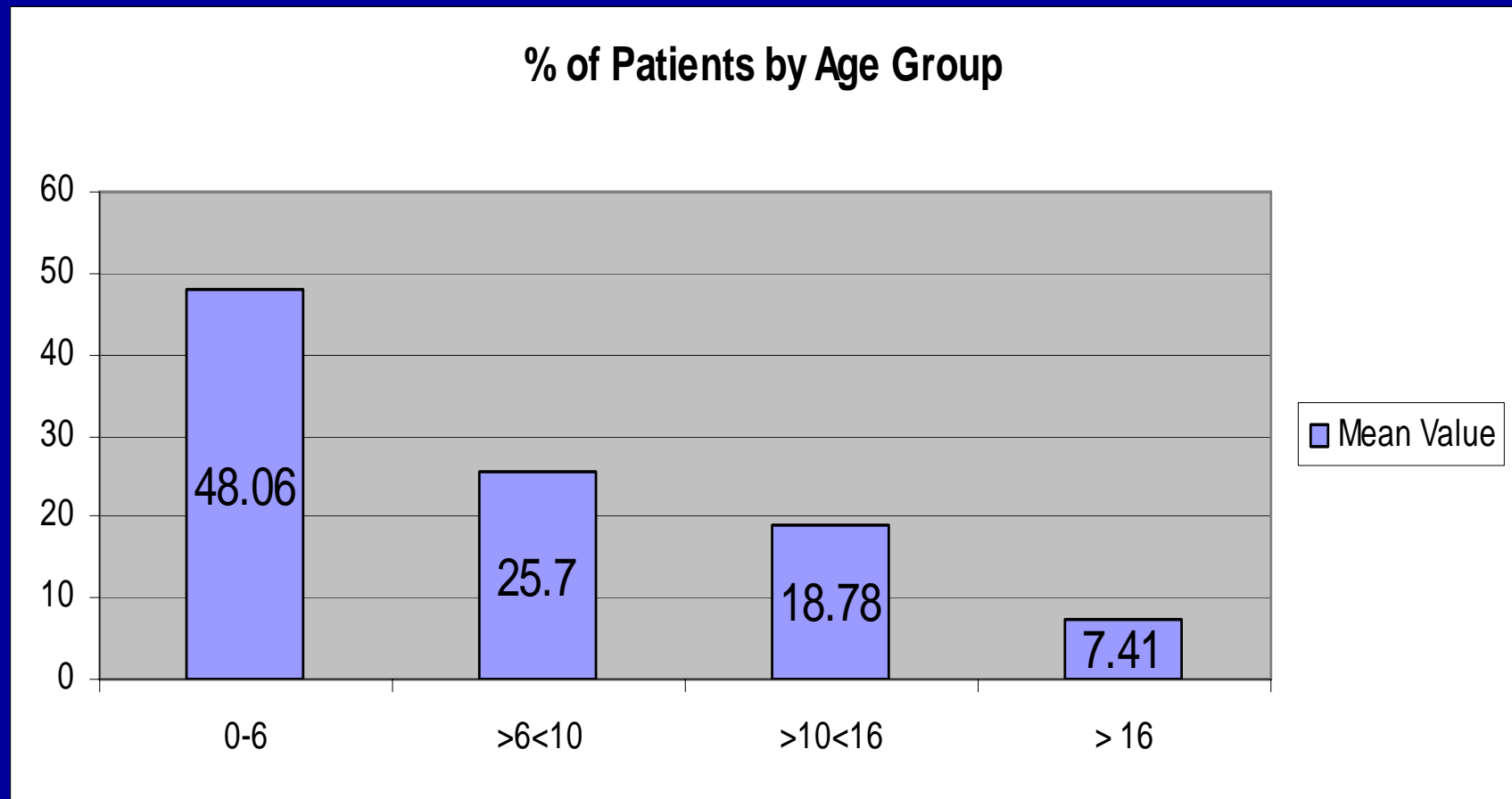
- Secretaries 2 , Cleaning lady 1
- Administration 1
- Assistant 1
- Cleaner 1
- Employee 1
- Lab workers 1
- Medical Secretary 1
- Psychologist 1
- Secretary 4
- Social assistant, Odontologist 2
- PE teachers, dietitian, psychologist 1

Question 9: Please give an estimate of your own number of patients.

Number of Patients

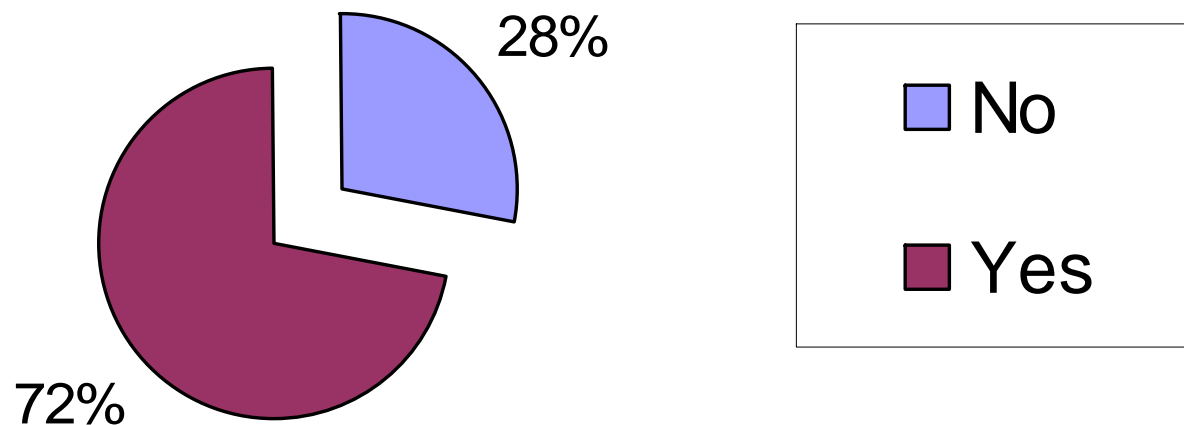


Question 10: If you can, please give an estimate of your own number of patients in percent by age range.

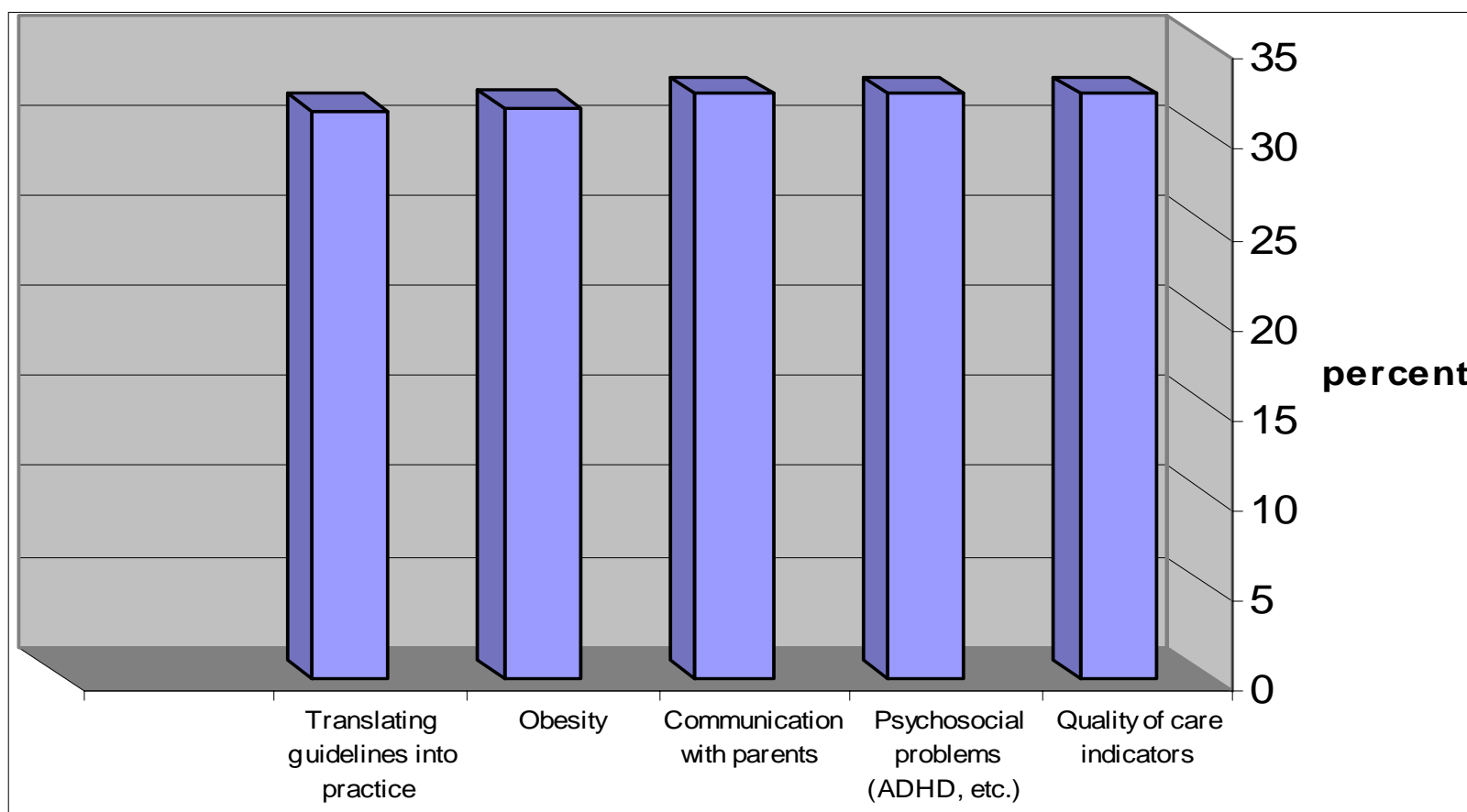


Question 11: Do you use an electronic medical record?

Use of Electronic Medical Record



Top issues : rated "5"



Main triggers for participation in future EAPRASnet projects

Improve the quality of care in my practice	102	73.38
A sense of contribution to child health research	97	69.78
Intellectual stimulation	95	68.35
Feeling of affiliation	52	37.41
Honorarium/reimbursement for participation in research	14	10.07

Main incentive for participation in a future EAPRASnet project

Interest in the topic	113	81.29
Being convinced that study results will change practice	99	71.22
Having enough time/energy to do it	80	57.55
Study appears easy to do	47	33.81
Honorarium/reimburs. for participation in research	27	19.42

Main obstacles to participation

Lack of time	101	72.66
No interest in the proposed topics	64	46.04
Studies appear time consuming	48	34.53
Studies appear complex	34	24.46
Lack of interest in research	31	22.30
Lack of energy	31	22.30
Lack of incentives for research	10	7.19

EAPRASnet Recruitment survey Summary 1

Practicing General Pediatricians	139
Male/ Female 50 % > 50 y	59 %
General Pediatrics > 50 % time	89 %
Direct Patient Care > 60% time	79 %
Administration time 20 – 40 % time	32 %
Solo Practice	47 %
No Nurse /Secretary	46 %
More than 1000 patients	59 %
Pts.Age < 6 y. 48% , >6 <10 y. 26 %	74 %
Use of Electronic Medical Record	72 %

EAPRASnet

Recruitment survey

Summary 2

- **Top issues interesting for research:**
 - Quality (guidelines, indicators etc.)
 - Communication with parents
 - Major diseases: ADHD, Obesity
- **Main trigger/incentive for participation:**
 - Improve the quality of care of my practice
 - Interest in topic
- **Main obstacle:**
 - Lack of time



EAPRASnet

Recruitment survey

GOOD NEWS

- Participating countries/pediatricians
- Coordinators (Recruitment , Replies)
- Time (January – March 2009)
- Very low costs
- Pediatricians interested to participate
- Societies interested to collaborate



EAPRASnet

Recruitment survey

BAD NEWS

- Mailing, FAQ, Lists, Checks > Secretary
- Countries / Coordinators (some)
- EAP IT service (Webpage)
- Questionnaire (mail, fax, reg.mail etc)



EAPRASnet

The Future

- Research Topics
- Web Site, Web Based Questionnaire
- Secretary
- Recruitment (Countries, Coordinators, Members)
- Collaborations
- Funding



EAPRASnet

The Future

- DVE - EAP EC Proposal
Refusal to vaccinate
- EAACI Pediatrics Section
Food Allergy and Anaphylaxis
- COST Harmonization of paediatric standards in
Primary Care
- EAPRASnet / AAP PROS meeting: EAPS 2010

There is strength in numbers
The key is global networking



EAPRASnet

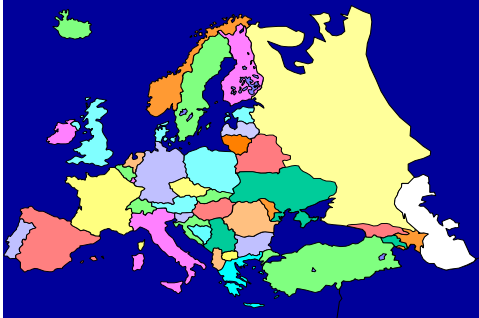
www.eapaediatrics.eu/eapras

Steering Committee

- Chairman.....SdT
- Scientific Director.....ZG
- Research ConsultantAG (AD)
- Coordinators /ECPCP..... FB, FK, GK, MSZ
- PSCWG delegatesDVE, AH

EAPRASnet SC Meetings at EAP meetings

European Academy of Paediatrics Research in Ambulatory Settings Network



Thank you !

